

Phospho-mouse CCNB3(T257) Antibody
Affinity Purified Rabbit Polyclonal Antibody (Pab)
Catalog # AP3809a

Specification

Phospho-mouse CCNB3(T257) Antibody - Product Information

Application	DB,E
Primary Accession	Q810T2
Reactivity	Mouse
Host	Rabbit
Clonality	Polyclonal
Isotype	Rabbit IgG
Calculated MW	158969

Phospho-mouse CCNB3(T257) Antibody - Additional Information

Other Names

G2/mitotic-specific cyclin-B3, Ccnb3, Cycb3

Target/Specificity

This mouse CCNB3 Antibody is generated from rabbits immunized with a KLH conjugated synthetic phosphopeptide corresponding to amino acid residues surrounding T257 of mouse CCNB3.

Dilution

DB~~1:500

E~~Use at an assay dependent concentration.

Format

Purified polyclonal antibody supplied in PBS with 0.09% (W/V) sodium azide. This antibody is purified through a protein A column, followed by peptide affinity purification.

Storage

Maintain refrigerated at 2-8°C for up to 2 weeks. For long term storage store at -20°C in small aliquots to prevent freeze-thaw cycles.

Precautions

Phospho-mouse CCNB3(T257) Antibody is for research use only and not for use in diagnostic or therapeutic procedures.

Phospho-mouse CCNB3(T257) Antibody - Protein Information

Name Ccnb3

Synonyms Cycb3

Function Cyclins are positive regulatory subunits of the cyclin- dependent kinases (CDKs), and thereby play an essential role in the control of the cell cycle, notably via their destruction during cell division. Its tissue specificity suggest that it may be required during early meiotic prophase I

(By similarity).

Cellular Location

Nucleus.

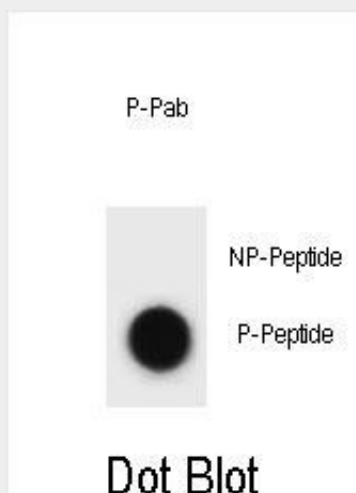
Tissue Location

Expressed in testis. Also expressed in the fetal ovary, but not in the adult.

Phospho-mouse CCNB3(T257) Antibody - Protocols

Provided below are standard protocols that you may find useful for product applications.

- [Western Blot](#)
- [Blocking Peptides](#)
- [Dot Blot](#)
- [Immunohistochemistry](#)
- [Immunofluorescence](#)
- [Immunoprecipitation](#)
- [Flow Cytometry](#)
- [Cell Culture](#)

Phospho-mouse CCNB3(T257) Antibody - Images

Dot blot analysis of mouse CCNB3 Antibody (Phospho T257) Phospho-specific Pab (Cat. #AP3809a) on nitrocellulose membrane. 50ng of Phospho-peptide or Non Phospho-peptide per dot were adsorbed. Antibody working concentrations are 0.6ug per ml.

Phospho-mouse CCNB3(T257) Antibody - Background

Cyclins are positive regulatory subunits of the cyclin-dependent kinases (CDKs), and thereby play an essential role in the control of the cell cycle, notably via their destruction during cell division. Its tissue specificity suggest that it may be required during early meiotic prophase I (By similarity).